

Master Craft

Log & Custom Homes, L.L.C

EXCELLENCE BUILT ON TRADITION

ALL PHASES OF CONSTRUCTION
GENUINE BARNWOOD
LOG AND TIMBER-FRAME KITS
REMODELS
CUSTOM BUILT LOG HOMES
TURN-KEY BUILDER



Voted Ashe County's Best
Homebuilder
2011





MASTERCRAFT LOG & CUSTOM HOMES LLC

Tradition. It's a word that is often used with home building and construction. At MasterCraft Log and Custom Homes, we've taken pride in the word and adopted it as a part of who we are. Giving you a quality home while considering your budget goes further than business for us. We value our clients as family, wanting to give you the most for your money. Our custom homes include components superior to those used in other national companies. What's more, MasterCraft offers an array of options when building your home, so you can include the special features that are important to you. We also give you the option to choose how long we assist you on your home building journey, whether MasterCraft delivers you a turn key home equipped with the latest interiors or only gives you a solid foundation to start with. We encourage your decisions; at MasterCraft our goal is to show you that Tradition isn't outdated and value doesn't mean compromise. You'll find a wealth of experience and testimonials in the pages that follow.





WHATS INSIDE

- 6** A LOG HOME COMPANY WITH TRADITION AND IMPRESSIVE ROOTS
- 9** CHOOSING THE MOUNTAIN LIFESTYLE
- 10** AN OVERVIEW OF LOG HOME CONSTRUCTION
- 12** EXTERIOR AND FOUNDATIONS
- 14** CUSTOM DESIGN AND TURN KEY HOMES
- 16** REFLECT ON YOUR THOUGHTS
- 18** DIRECTORY OF MASTERCRAFT HOME PLANS
- 28** GETTING STARTED WITH MASTERCRAFT



ROOTS

Hello. My name is Brandon Dillard, owner of MasterCraft Log and Custom Homes. I grew up in Ashe County and was introduced to the construction business by “The Old Man”, C.H. Wagoner, when I was 12 years old. He taught me at an early age that hard work is good, but quality work is better.

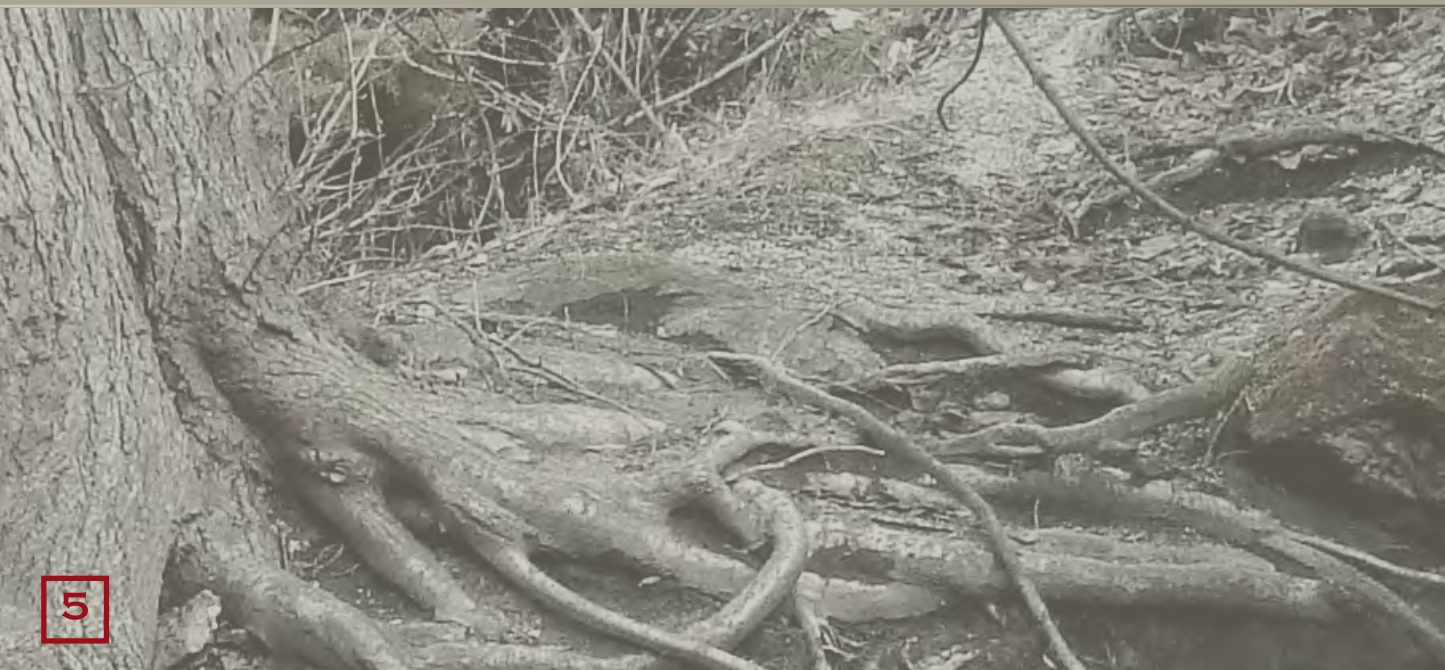
After graduation, I joined the Army and served my country proudly. I returned to Ashe County and after settling back into real life, I began working with C. H. building homes. We have been building them ever since.

In good times and bad, we continue to build quality homes. MasterCraft has weathered this most recent economic downturn by continuing to build quality homes for a fair price. Most of my clients are referrals from previous clients or from local folks who know and trust me both personally and professionally. In 2011 we were voted “Best Home Builder in Ashe County”.

My name is my reputation, which is built on honesty, trust, quality workmanship, fair pricing and above all, doing what I say I am going to do. My wife Stacey, and our two sons, Hunter and Kabel, will accept no less from me. They wear my last name.

I build houses, but I also build friendships. Allow me to build your home. Allow me to earn your trust and your friendship.

Sincerely,





**“BUILDING OUR DREAM VACATION HOME AND CHOOSING
MASTER CRAFT LOG HOMES WAS ONE OF THE BEST DECISIONS
WE HAVE MADE AS A FAMILY.”**

THE WOLF FAMILY

“My clients become friends because I treat them like friends. They know I will be there for them long after their homes are finished. Many keep in touch with me, even years later.”



FIND YOUR STYLE

One of the first choices a log home buyer must make is the “style” of log he or she wants. Modern milling machines offer consumers an array of log profiles. The logs themselves can have a variety of surface finishes: milled, hand-peeled, hand-adzed, planed and sanded, or machine-adzed.

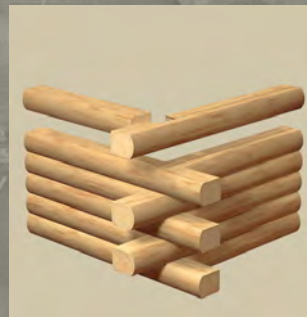
While there are certainly more log wall and corner styles than appear on this page, these are the basic forms in which most of today’s variations are available.



DOVE TAIL CHINKING



ROUND/FLAT



ROUND/ROUND



SADDLENOTCH



DOVE TAIL V
GROOVE
CHINKING



LOG PLANK

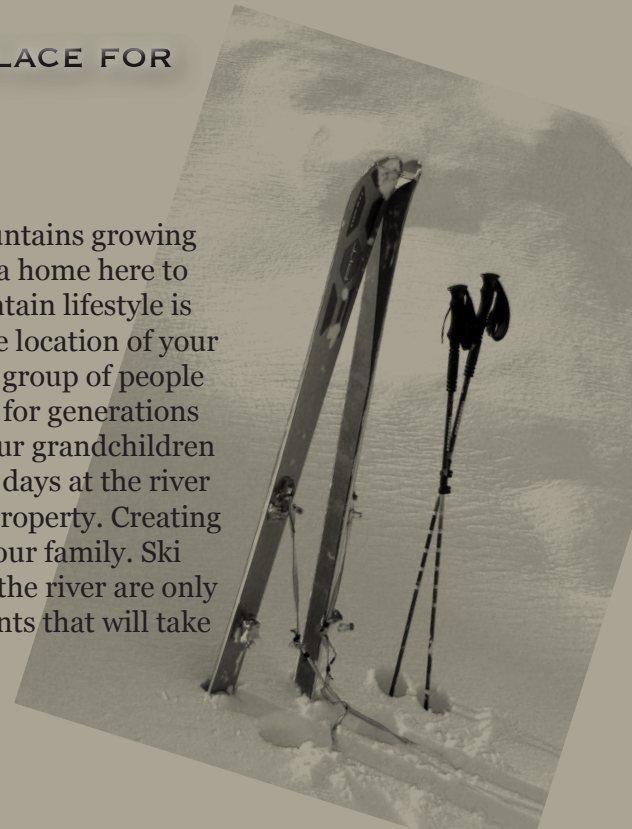


ANY LOG PROFILE CAN BE MATCHED WITH
CONVENTIONAL FRAME(STICK BUILT) HOME
WITH LOG SIDING.



MUCH MORE THAN A HOME. A PLACE FOR MEMORIES

Whether you were born here in the Blue Ridge mountains growing up rafting down the New River or you are building a home here to fulfill your dream of a Mountain getaway, the mountain lifestyle is one of peace and adventure. Once you decide on the location of your new MasterCraft home, you will become a part of a group of people that have chosen a way of life to create possibilities for generations to come. With the quality product of our homes your grandchildren will be able to take advantage of the warm summer days at the river as well as the natural wild life that frequents your property. Creating memories is one of the greatest gifts you can give your family. Ski trips in the winter and summer vacations spent on the river are only the beginning when it comes to the amazing moments that will take place in your new home.



Giving the gift of the Mountains to younger generations goes well beyond summer vacation.





OVERVIEW OF LOG HOME CONSTRUCTION

Building a home from scratch can be overwhelming. We understand that so our goal is to make the construction process, from start to finish, an enjoyable experience. Unlike a tract home where almost all choices are made for you, a custom mountain home allows you to select virtually every aspect of the look and texture of the house so at the end, it is a reflection of you.

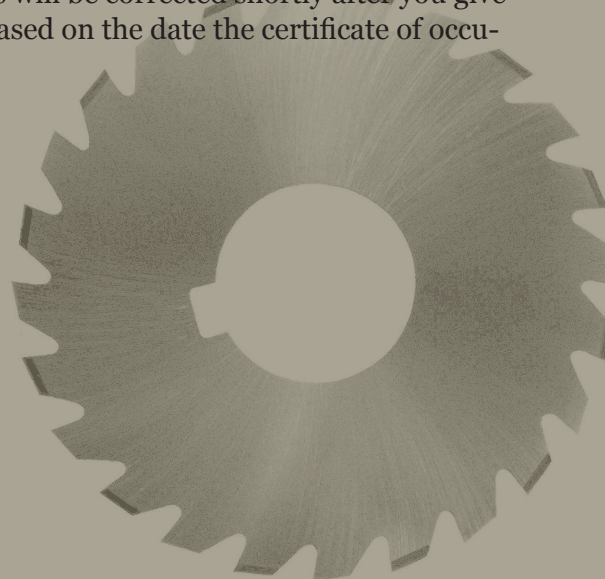
BUILDING

After you settle on a design and the materials to use, we create a contract for you. Once signed and the initial deposit is received, we begin construction. The contract price is the cost unless you make changes that cost us or if you exceed your allowances.

The actual construction process will take about 5 to 7 months. We handle every aspect of construction from ordering materials to hiring subcontractors. Most of our subcontractors have been working for us for years. We know and trust their work. We also personally inspect all work for quality. We ensure all permits are issued and inspections are completed. We keep you informed of the progress via photos of the work and encourage you to schedule walk through site visits with us so that we can show you work in progress.

WARRANTY

Once construction is finished and you move in, you may identify minor items that need some attention. This is called the “punch list.” These items will be corrected shortly after you give us the list. We also warranty our work for one year, based on the date the certificate of occupancy was issued. A warranty is only as good as the company behind it. We pride ourselves on responding to your needs. Our previous clients can attest to the fact that we will be there for you long after your house is finished. We stand behind what we build. Our longevity in the business and our former clients are proof of it.







EXTERIOR AND FOUNDATION OF LOG HOME BUILDING

The exterior look of a home is a personal preference. Rustic looking homes use wood or wood looking materials and stone. Contemporary looking homes use lap siding, brick or stucco, painted, traditional or nontraditional colors.

SOLID LOG

A log home is most closely associated with mountain living. A log home uses solid wood logs fastened together to form exterior walls. The two most popular log styles are “D” logs and “square logs.” All logs have tongue and grooves on the tops and bottoms that allow the log to fit snugly with one another.

“D” logs are round on the exterior and flat on the interior. The round exterior gives the illusion of a full round log while the flat interior creates a flat wall that is more conducive to wall hangings.

Square logs are flat on both the exterior and interior. They are not really square but more rectangular. Some square logs come notched to allow for chinking. This is more of a design preference rather than a functional issue. Square log or round surfaces can be ordered with a hand hewn look to mimic how a log would look if a hatchet or maul was used to square the wood.

Starting with a solid foundation is the most important thing you can do for your investment





Real logs have various corner looks. Dovetails, butt and pass and interlocking saddle notch are three of the most popular. The corner style is a function of the log style and your preference.

LOG SIDING OR “HALF LOG”

Log siding, also called “half log”, is an alternative to real logs. It is nailed to the exterior of the house frame. Under the log siding is a vapor barrier and wood sheathing to seal the home envelope from moisture and air penetration. The inside walls are covered in tongue and groove boards the same height as the log siding to give the illusion of a real log, inside and out. Drywall can also be used. Corners are shaped the same as real logs. Log siding, including the corners, is so good nowadays that it is difficult to tell the difference between real logs and log siding.

The advantage to log siding is the ability to seal the home far better than real logs allow. Real logs shrink over time exposing minute spaces that allow air to penetrate inside. Log siding, because it is sealed with a vapor barrier and sheathing, forms a tighter house envelope.

TIMBER FRAME

Nothing compares to the grandeur of a timber frame structure. It commands the eye to explore every angle, every curve, every joint. It is poetry in the form of wood.

We can build the entire home frame from large wood timbers or only specific interior parts or create a timber frame entry that is a visual centerpiece of your home. The exterior of the timber frame is covered with your choice of siding, usually lap siding.

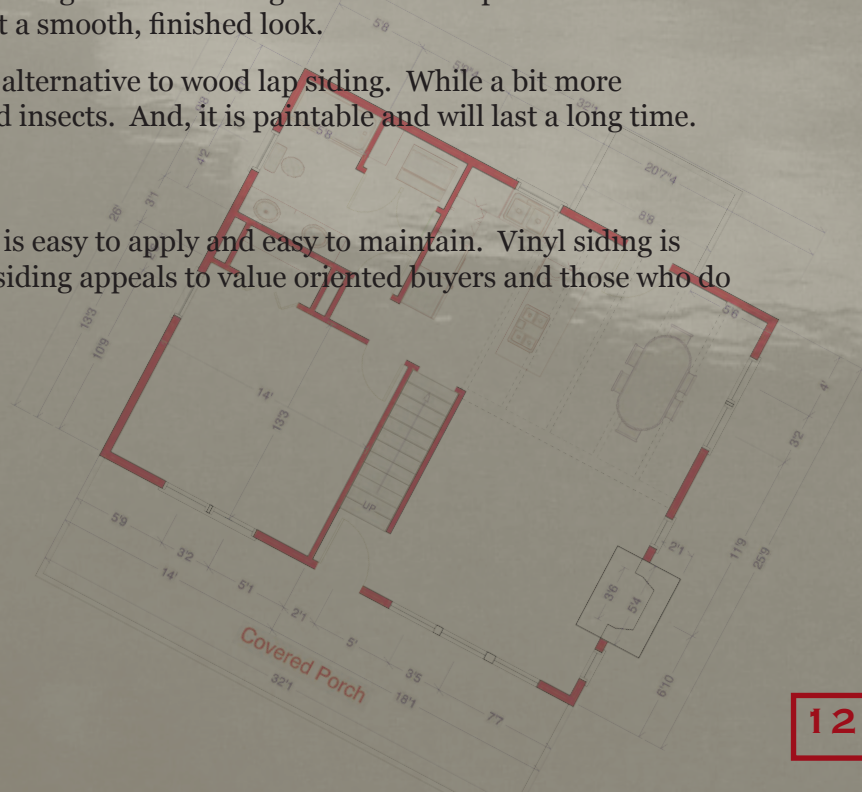
LAP SIDING

Another alternative to log or log siding is lap siding; boards that overlap one another on a stick (2 x 6 studs) built frame. It is nailed over a vapor barrier and sheathing to create a snug interior envelope. The corners are finished with vertical pieces of 1 x 4 material to give it a smooth, finished look.

Concrete board with wood grain etching is a popular alternative to wood lap siding. While a bit more expensive than wood, it withstands moisture, rot, and insects. And, it is paintable and will last a long time.

VINYL SIDING

Vinyl siding is the least expensive siding material. It is easy to apply and easy to maintain. Vinyl siding is used for contemporary looking houses. This type of siding appeals to value oriented buyers and those who do not like the rustic look.





TURN KEY CONSTRUCTION

We build any part of a home that you want. Our most popular choice from clients is a turn key home. Turn key means that once construction is finished, all you need to do to move in is bring your furniture.

DESIGN

Everything starts with a plan. This book contains our most popular floor plans and exterior designs. If you don't see something you like, we can easily design a home for you. If you have a photograph of a house you like, we can work with it. If you have an idea for a design, we can bring it to life. If you already have floor plans, we can use them. If you like the exterior but want to move interior walls, that is easy to do. Need more windows or doors? No problem.

We specialize in real log, log siding or timber frame homes. We build contemporary houses too (2x6 framing). If you only want us to handle part of the construction and you do the rest, that is fine with us too.

In addition to the house design, placement on the land and orientation of the house are essential parts of the design process. We visit your land to evaluate the site the house will be built on. We offer suggestions to capture the best view and easiest access.

**There is no better feeling,
than trusting your builder to
deliver your home. Just the
way you know it should be.**





TURN KEY INCLUDES:

- Permits
- Site work
- Grading allowance
- Well allowance
- Septic system
- Real log, log siding or other material you choose
- Windows and doors, interior and exterior
- Metal or shingle roof
- Wood flooring throughout
- Plumbing, plus plumbing fixture allowance
- All electrical wiring
- Light fixture allowance
- Cabinet allowance
- Appliances
- Fireplace



Within these categories, you select colors, styles and designs to match your budget. For many interior items, such as lighting or plumbing fixtures, you can purchase them and have them shipped to our office where we will store them for you until it comes time to install them. We can also purchase them for you once you tell us what to buy. We are very flexible. After all, it is your home. **We will walk you through the entire process of building your home. Every detail is talked about from standard options to upgrades such as barn wood interiors and custom beam work. There should be no surprises at the end of construction.**





**MASTERCRAFT LOG & CUSTOM HOMES
LLC COLLECTION AND PLANS**

PLAN INDEX

18 SKULSKIE

19 RICHARDSON

20 JONES

21 GOEBEL

22 E. ROSEMOND

23 WOLFF

24 RODRIGUEZ

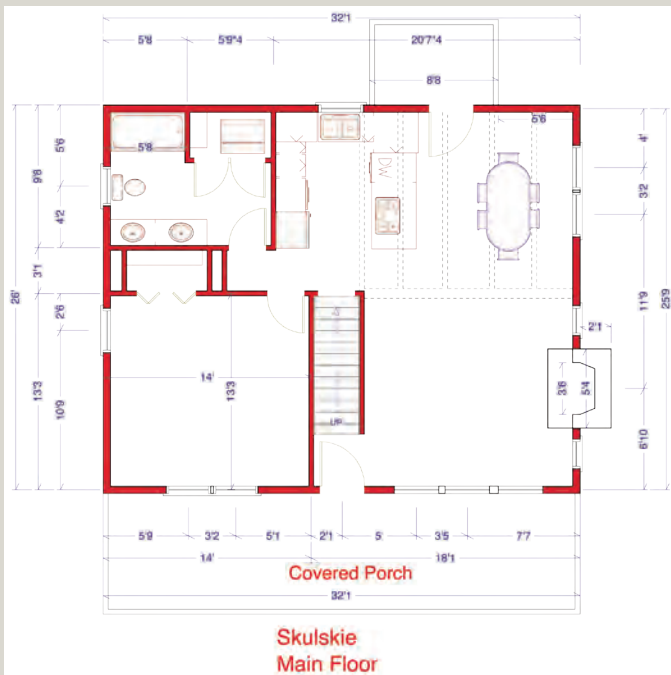
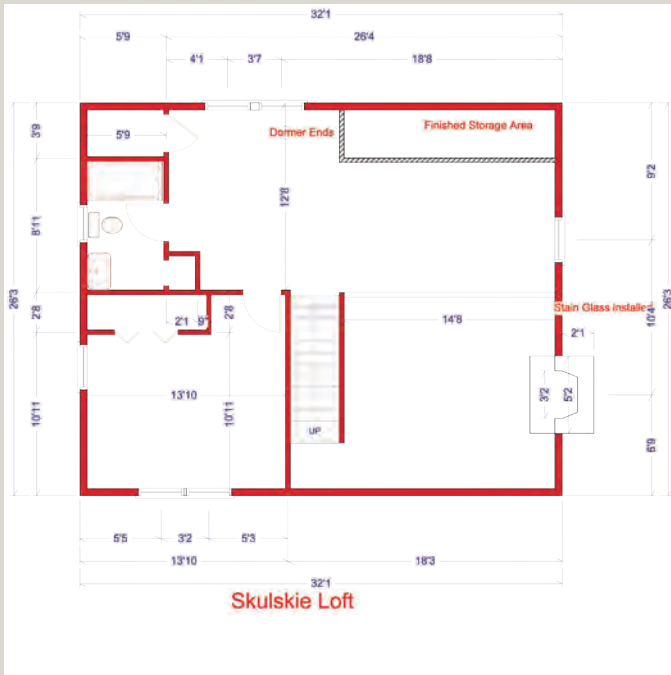
25 VINCENT

26 ALTERNATE HOME CHOICES

Main Floor	1761
Loft	1178
Basement	1761
Covered Porch	176
Total Covered	4876
Open Deck	888
Total Building	5564

PLANS CAN BE CUSTOMIZED

SKULSKIE

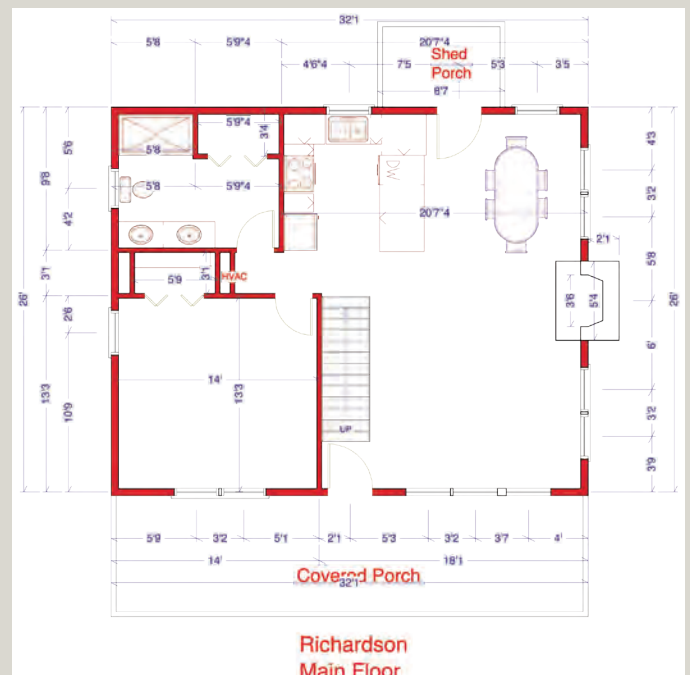
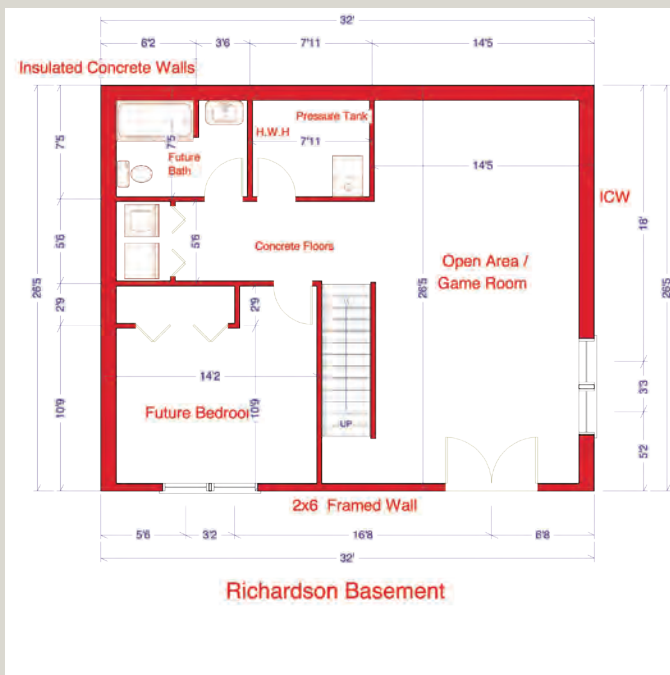
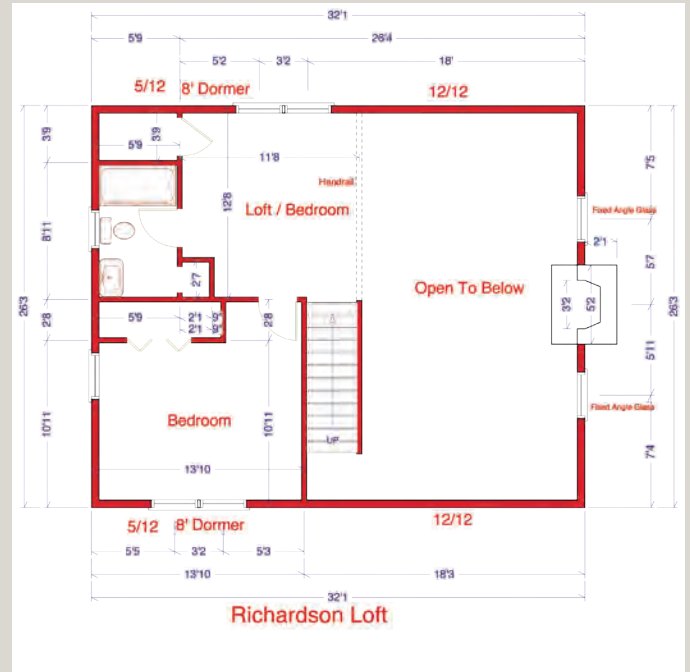


“For many years we had a dream of having a home in the mountains. Living two hours away from our cabin, we needed someone we could trust. We felt that immediately with Brandon. There is a personal touch we feel Brandon gives his homes. We believe Brandon and his workers have a true sense of personal pride in every home they complete. If Brandon said he would do something, then he did. He kept his word he never let us down.

We feel very blessed and proud to have a MasterCraft home.”

Martin and Anne Skulskie

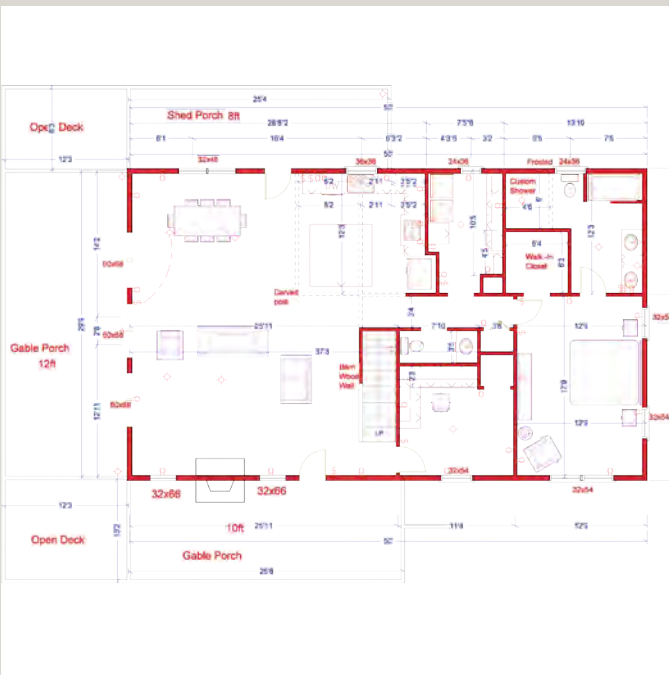
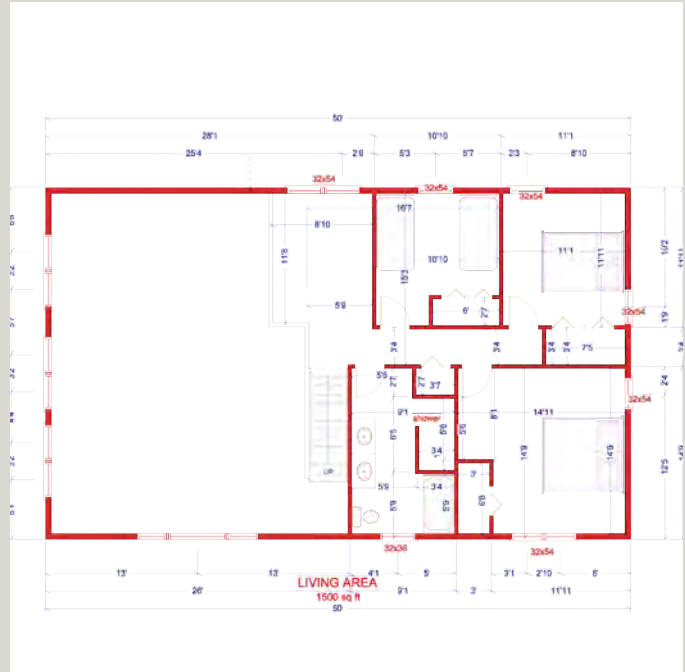
RICHARDSON



“Linda and I had dreamed of having a mountain cabin for years and are very pleased with the log cabin that MasterCraft built for us. The quality of workmanship and materials were exceptional and we feel that it was reasonably priced. Brandon and everyone at MasterCraft aim to please and I value the ongoing relationship that we have.”

Mac and Linda Richardson

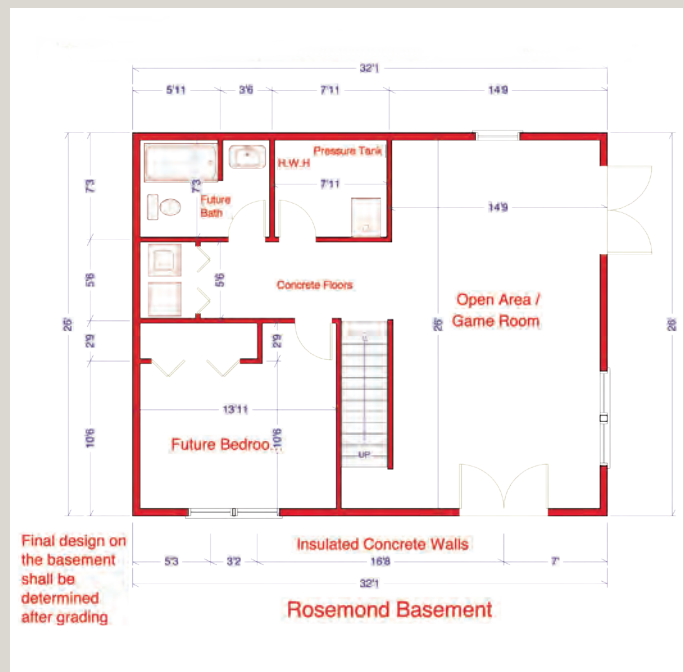
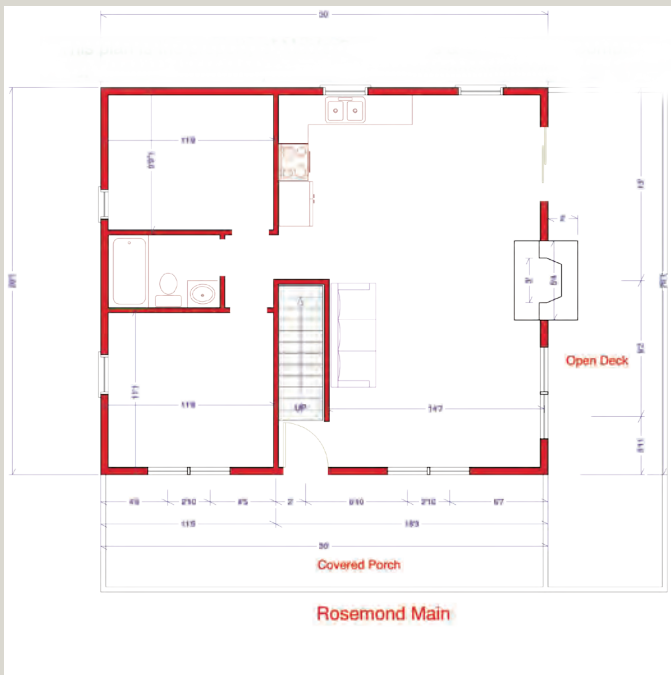
GOEBEL



“You can’t go wrong with Mastercraft! It was blessing for us to find such a honest and competent builder.”

Barbara Goebel

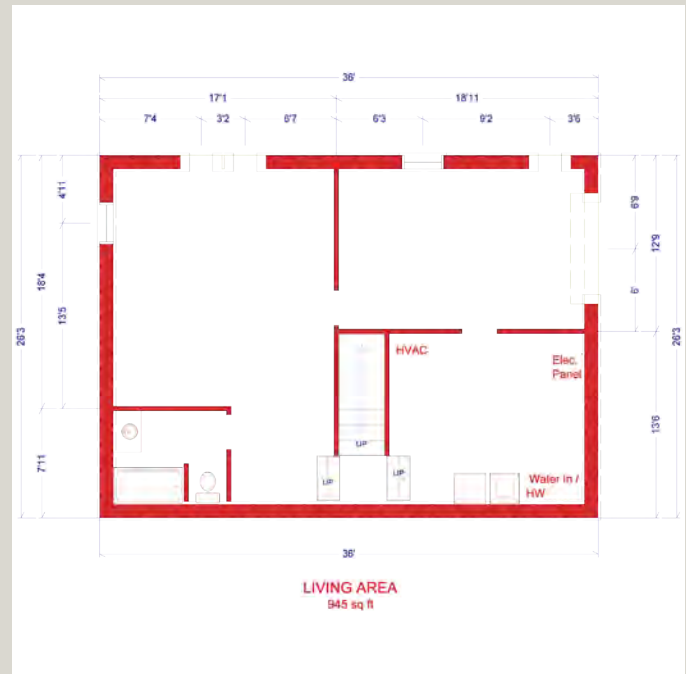
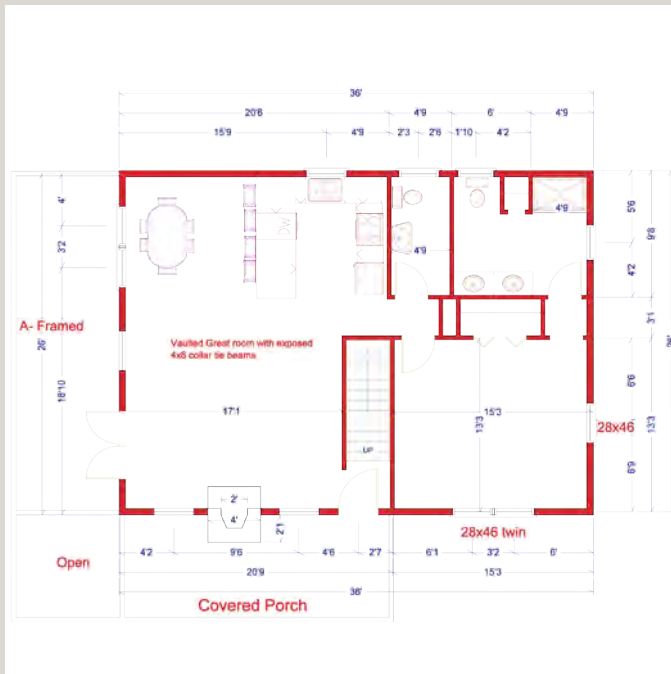
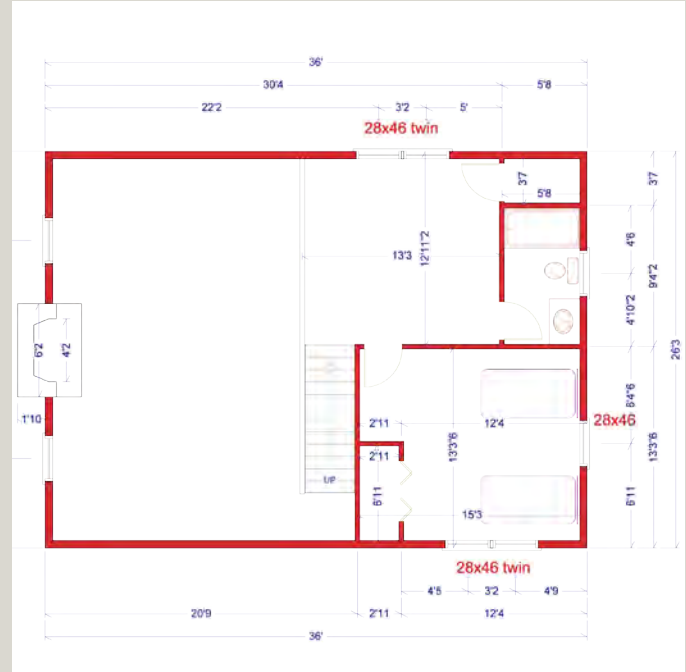
E. ROSEMOND



“My father enjoyed our cabin so much, he had MasterCraft build him his own!”

Eric Rosemond

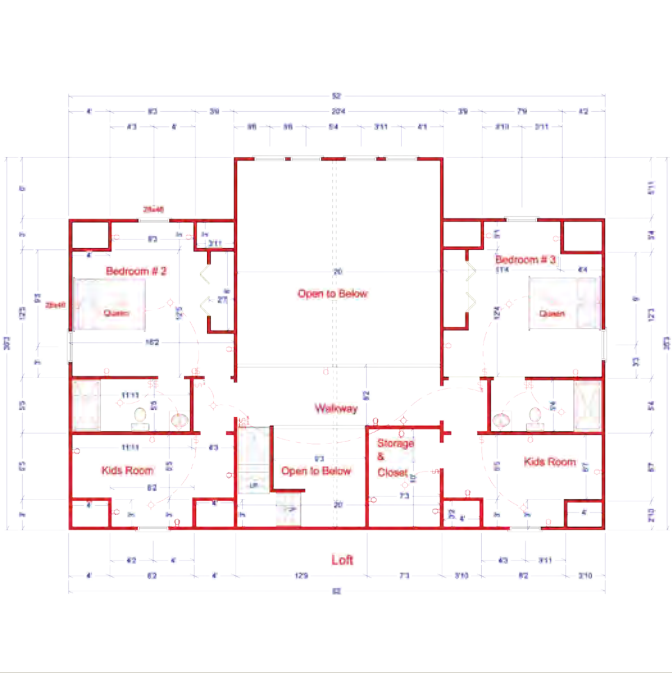
WOLFF



“For many years we had been dreaming about owning a vacation home in the North Carolina mountains. After looking at several national “Kit” builders and their websites we discovered Master Craft Log Homes. MasterCraft Log Homes had the experience, knowledge and reputation to be our builder. 9 months later we were living in our dream vacation home. That was four years ago. The quality of the materials and construction methods used is evident. Building our dream vacation home and choosing Master Craft Log homes was one of the best decisions we have made as a family. We will be enjoying this home for many years to come.”

Thank You,
Wolff Family

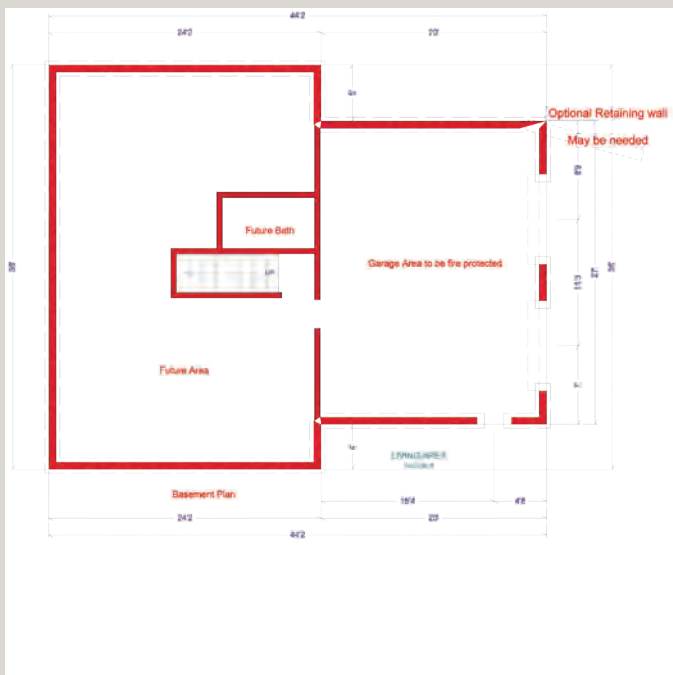
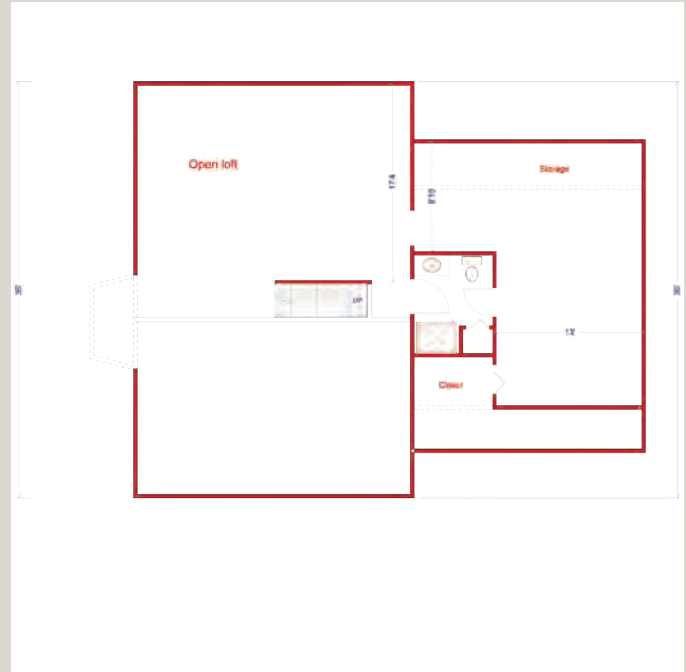
RODRIGUEZ



“Thanks, MasterCraft, for building our estate of 40 acres with our 5800sf lodge, and the continued friendship for over 4 years.”

Jorge Rodriguez

VINCENT



“We lived 6 hours away and Brandon kept us constantly up to date on the construction of our home even with sending pictures of the progress. It has been a pleasure to work with Mastercraft and we are blessed to have found Brandon Dillard and have him build our home.”

Judy and Russ Vincent

ALTERNATE HOME CHOICES



Choosing what type of home that you want is one of the first decisions that a home builder has to make. MasterCraft Log Homes and Brandon not only specializes in timber framing and log cabins but have also built many other types of homes. We pride ourselves as builders, and that means building what you consider your dream home whether it be a traditional Full Log Home or a Vinyl siding home. We can take you from breaking ground to turn key.



“MasterCraft Log Homes and Brandon Dillard explained and reassured us that MasterCraft would be completing a turnkey operation from planning and preparing plans for our Architectural Control Committee, to grading the lot, to well drilling, to building, to the finishing touches including handing the keys over to us. Brandon even gave us a much needed bank construction loan square foot price. Brandon said would he be there and available throughout the processes, and he was!! Brandon was easy to get hold of and even allowed us to make changes during construction.

Two great things happened because of my wife and I walking into MasterCraft back in 2004 ---I am enjoying a well-built cabin in the mountains of North Carolina and a real friendship with Brandon.”

Adam & Katherine Cohen
Mooresville, NC



GETTING STARTED WITH MASTERCRAFT

Now that you have had the chance to get a better understanding of what we here at MasterCraft Log Home and Builders stand for, we hope that you are more than interested in joining our family of MasterCraft Clients.

Getting started on your journey of building your dream home couldn't be easier. Brandon always says "come on back, sit down and let's talk about what we can build together" Once you have chosen us to join in on your future endeavor, we commit to being as involved as you want. MasterCraft has been voted the number One Home builder as well as upholding a reputation for going above and beyond expectations with its building projects.

Choosing the right time to build your dream home or building that perfect mountain get away, can be a confusing decision. We would like to say that there is no time like the present and with today's interest rates being some of the best rates historically, we hope to comfort you by saying that we are right there with you. We take pride in our honesty and great pricing, as well the desire for you to become more than just a client.

**"COME ON BACK, SIT DOWN AND LET'S
DISCUSS WHAT WE CAN BUILD TOGETHER."**



“WE HAVE BEEN EXTREMELY PLEASED AND IMPRESSED WITH MR. DILLARD’S PROFESSIONALISM, EXPERTISE, AND COMMITMENT TO EXCELLENCE. HE IS A PERSON WHO VALUES ETHICS IN HIS DEALINGS WITH HIS CUSTOMER. HE IS FRIENDLY AND ALWAYS RESPONSIVE TO THE CUSTOMER’S NEEDS. MY WIFE AND I COULD NOT RECOMMEND HIM MORE HIGHLY ”

JOHN ROSEMOND





MASTERCRAFT LOG & CUSTOM HOMES LLC

312 SOUTH JEFFERSON AVE / PO BOX 134

WEST JEFFERSON, NC 28694

336-846-4466 OFFICE

WWW.MASTERCRAFTNC.COM

© 2012 MASTERCRAFT HOMES